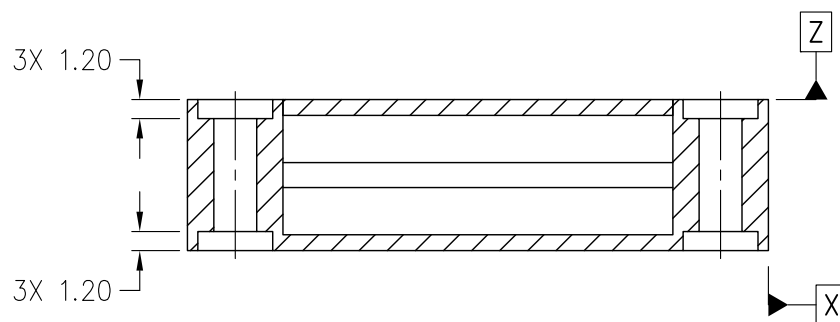


JEDEC SOLID STATE  
PRODUCT OUTLINE  
Copyright © 2021 JEDEC

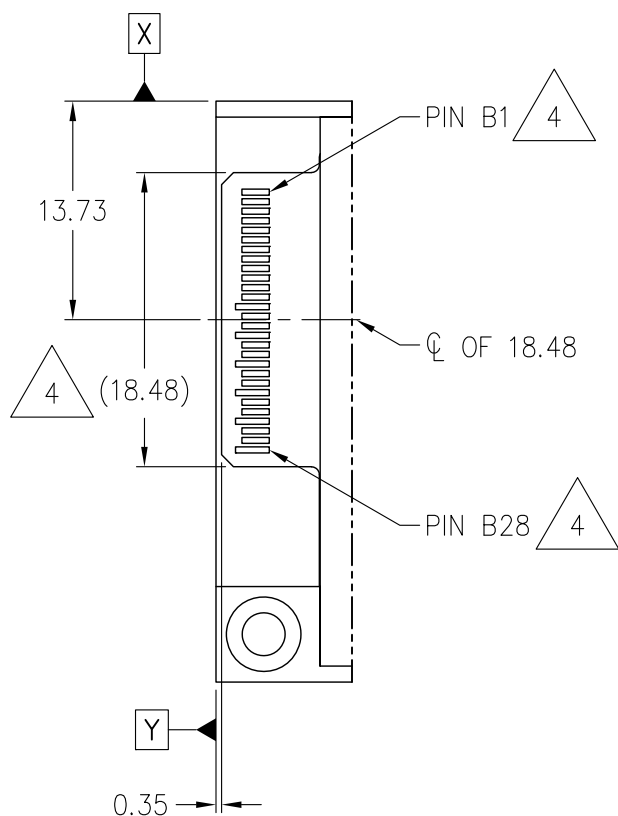
THIS *REGISTERED OUTLINE* HAS BEEN PREPARED BY THE JEDEC JC-11 COMMITTEE  
AND REFLECTS A PRODUCT WITH ANTICIPATED USAGE IN THE ELECTRONICS INDUSTRY;  
CHANGES ARE LIKELY TO OCCUR.

TITLE	PACKAGE DESIGNATOR	NUMBER	ISSUE	DATE	SHEET
METAL ENCLOSURE FOR SSD DEVICES, E1.S AND M.2	MMXH- R(##)x36p75Z(##)	MO-348	A	JUL 2021	1 OF 6

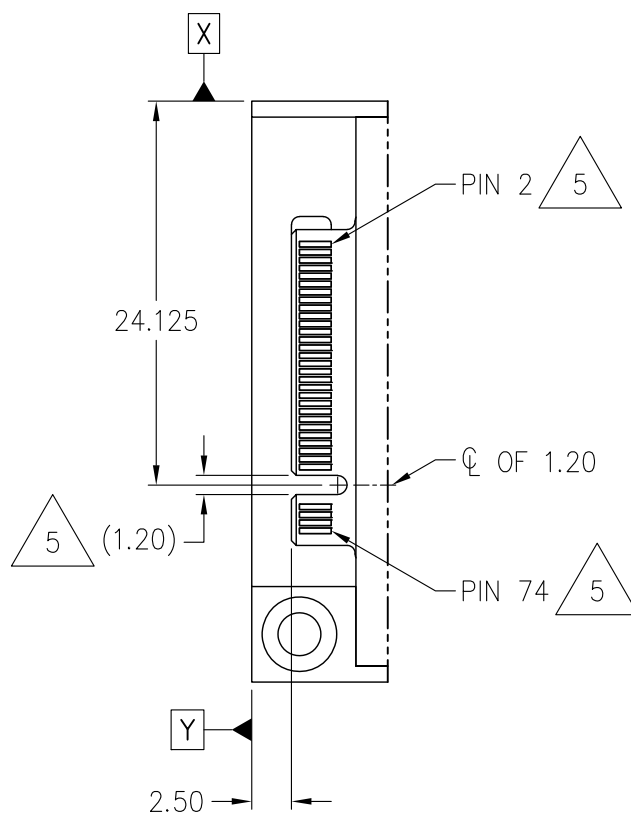


SECTION B-B  
ROTATED 90° CW

MODULE LOCATION IN X-AXIS & Y-AXIS WITH RESPECT TO ENCLOSURE

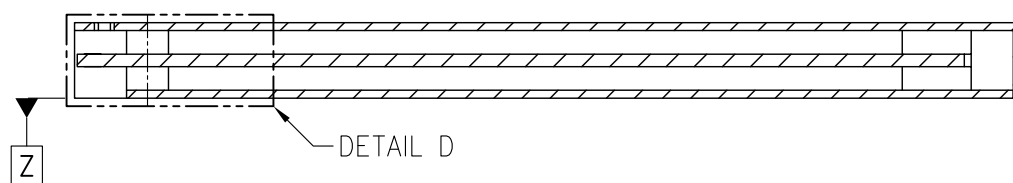
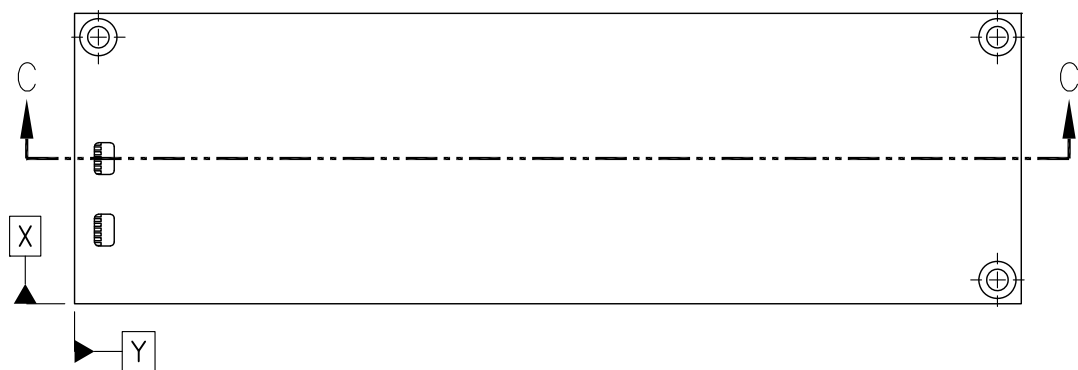


E1.S FOR 1C(x4) TYPE



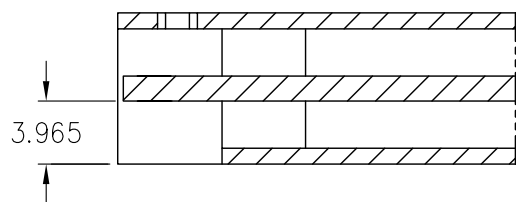
M.2 FOR KEY M TYPE

DETAIL A

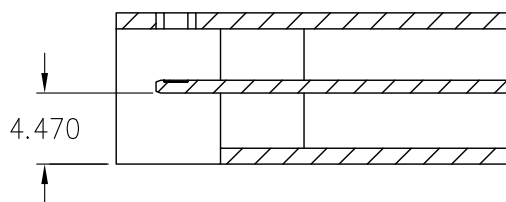


SECTION C-C

MODULE LOCATION IN Z-AXIS WITH RESPECT TO ENCLOSURE



E1.S FOR 1C(x4) TYPE



M.2 FOR KEY M TYPE

DETAIL D

# VARIATIONS OF ENCLOSURE WITH LENGTH (LONG OR SHORT) AND THICKNESS (NONE, SYMMETRIC OR ASYMMETRIC)

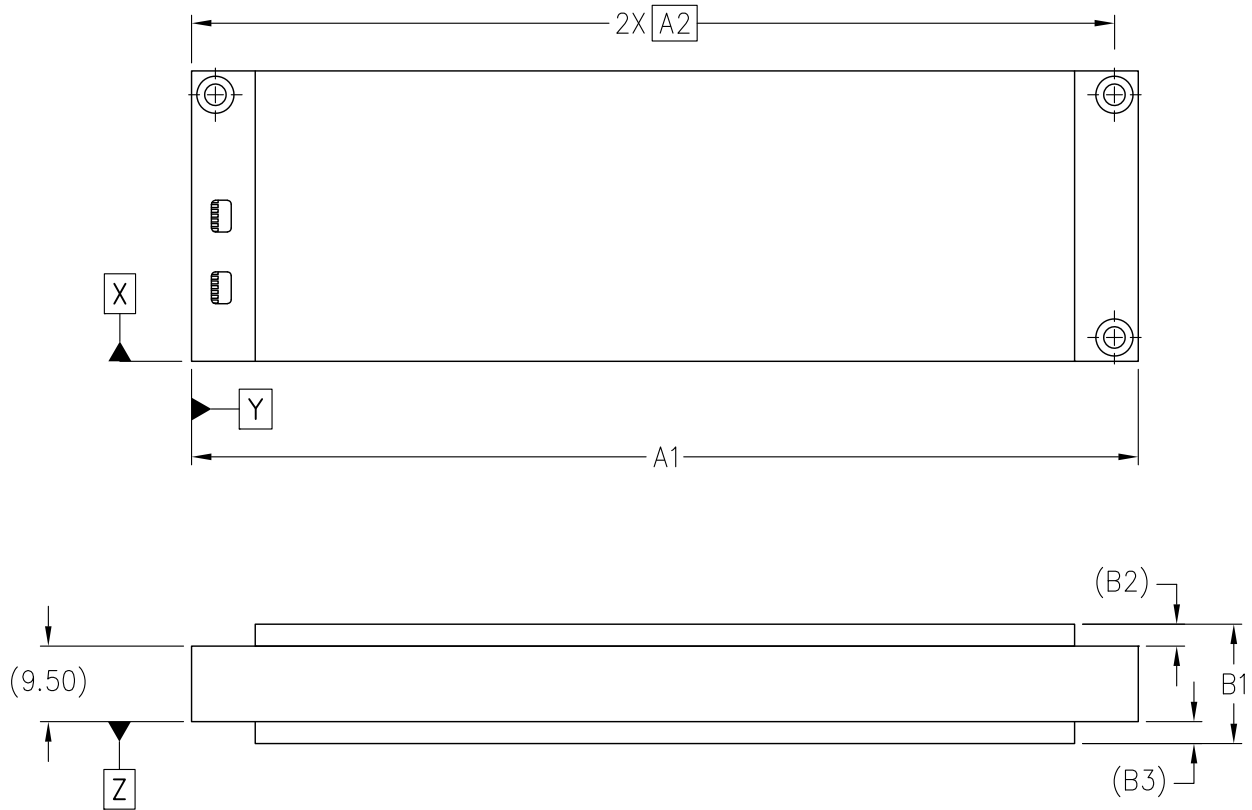


TABLE 1

VARIATIONS IN LENGTH						
SYMBOL	LONG			SHORT		
	MIN	NOM	MAX	MIN	NOM	MAX
A1	118.55	119.00	119.45	51.55	52.00	52.45
A2	116.00 BASIC			49.00 BASIC		
NOTES	1, 2, 3			1, 2, 3		
REF	14–205			14–205		
ISSUE	A			A		

TABLE 2

VARIATIONS IN THICKNESS									
SYMBOL	9.5MM FORM FACTOR (W/O FIN)			15MM FORM FACTOR (W/ ASYMMETRIC FIN)			15MM FORM FACTOR (W/ SYMMETRIC FIN)		
	MIN	NOM	MAX	MIN	NOM	MAX	MIN	NOM	MAX
B1	9.50 REF			14.40	15.00	15.35	14.40	15.00	15.35
B2	–			5.5 REF			2.75 REF		
B3	–			–			2.75 REF		
NOTES	1, 2, 3			1, 2, 3			1, 2, 3		
REF	14–205			14–205			14–205		
ISSUE	A			A			A		

## NOTES:

1. DIMENSIONING AND TOLERANCING PER ASME Y14.5–2009.
2. ALL DIMENSIONS ARE IN MILLIMETERS.
3. TOLERANCE ON ALL DIMENSIONS  $\pm 0.15$  UNLESS OTHERWISE SPECIFIED.



SNIA SFF–TA–1002 PROTOCOL AGNOSTIC MULTI–LANE HIGH SPEED CONNECTOR  
REV 1.3, FEB 2020.



PCI EXPRESS M.2 SPECIFICATION REV 4.0 VER 1.0, NOV 2020.

STP (3D) FILE RECORD  
3D FILE NAMES MAY EXCEED LENGTH REQUIREMENTS FOR SOME SOFTWARE TOOLS.

STP FILE NAME	DATE	ITEM NUMBER
MO-348A_MMXH-R119P45x36p75Z9p85	JUL 2021	14-205
MO-348A_MMXH-R119p45x36p75Z15p35_ASYM	JUL 2021	14-205
MO-348A_MMXH-R119p45x36p75Z15p35_SYM	JUL 2021	14-205
MO-348A_MMXH-R52p45x36p75Z9p85	JUL 2021	14-205
MO-348A_MMXH-R52p45x36p75Z15p35_ASYM	JUL 2021	14-205
MO-348A_MMXH-R52p45x36p75Z15p35_SYM	JUL 2021	14-205

## TASK GROUP CONTRIBUTORS

AMPHENOL EAST ASIA LTD.  
FOXCONN INTERCONNECT TECHNOLOGY LTD.  
INTEL CORPORATION  
LUXSHARE-ICT INC.  
MICRON TECHNOLOGY INC.  
SAMSUNG SEMICONDUCTOR



# CHANGE RECORD

IF THE CHANGE INVOLVES ANY WORDS ADDED OR DELETED (EXCLUDING DELETION OF ACCIDENTALLY REPEATED WORDS), THE CHANGE IS TO BE INCLUDED BELOW. PUNCTUATION CHANGES MAY OR MAY NOT BE INCLUDED.

INITIAL ISSUE: A	DATE: JULY 2021	ITEM NUMBER: 14-205
------------------	-----------------	---------------------

CHANGE RECORD HISTORY:
------------------------

ISSUE: -	DATE: -	ITEM NUMBER: -
----------	---------	----------------

LOCATION:	CHANGED FROM:	CHANGED TO: